



Quality is our Pride.  
Trust is our worship.



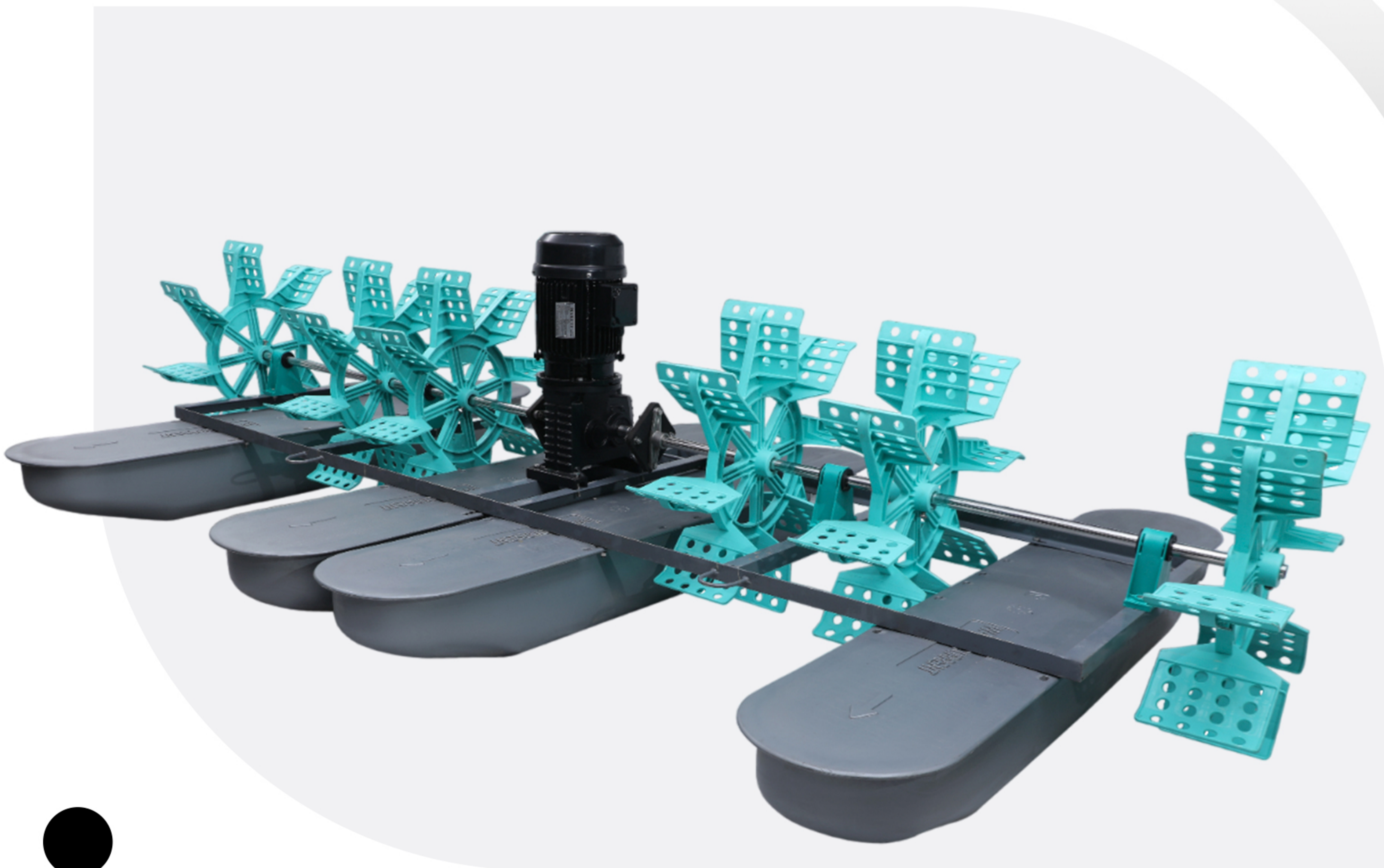
 elizar



Maruti Enterprise has been established with a vision to produce best paddle wheel aerator for aquaculture farmers. From a years of experience we observed that farmers are facing many problems with the aerator i.e. it creates low Dissolve Oxygen (D.O.), Motor takes more AMPS, It splashes low water current, Impeller depth has not much deep because of shape and design of impeller, Rust in motor and gearbox, Gears got damage after 1 year. Due to these problems durability of aerator decreases by 2 years.

To overcome these problems, we decided to manufacture complete aerator in India. In our aerator, we are using H-class insulation & silicon stamping which reduces motor AMPS, our impeller depth on water surface has enough deep so it creates much oxygen and water current, our Motor & Gearbox has a CED (Cathodic Electro Deposition) coated which prevents rust and provides long life. These are the key differentiation of our products. Apart from that, our diversified product range, Competitive price, on-time delivery and delight service has given us an important place in the competitive world.

Each and every country has a different method of culture which requires modifications in aerator, by understanding those needs, we are always ready to manufacture customize product, so every country can have and enjoy our products.



# 2HP PADDLE WHEEL AERATOR

2HP 4 paddle wheel aerator is the most used and widely popular aerator model in aquaculture industry. Our aerators are appreciated for their features like longer life, easy to use, sturdy designs and damage resistance. We are focused towards the quality. In motor we are using H-Class insulation & silicon stamping which reduces the AMPS consumption and having thermo sensor technology which reduces burning issue. Our Motor & Gearbox are CED coated which prevents corrosion issues. These are the key factors which makes our aerator different and globally recognised.

KW	HP	Voltage	HZ	Efficiency	DO	AMP
1.5KW	2	210 & 415	50 & 60	82.8%	2.5 - 2.8	2.2

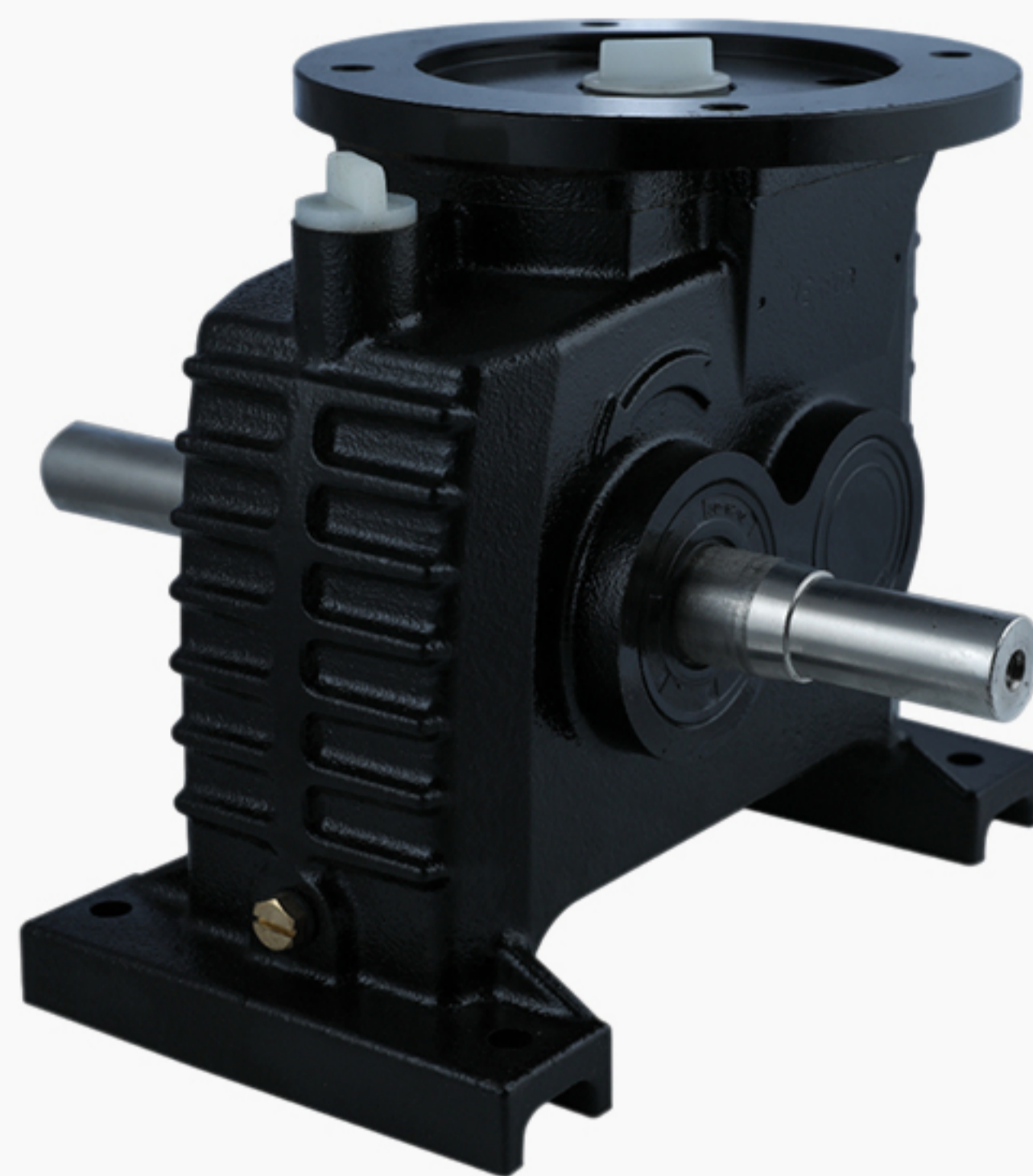


# SPARE PARTS



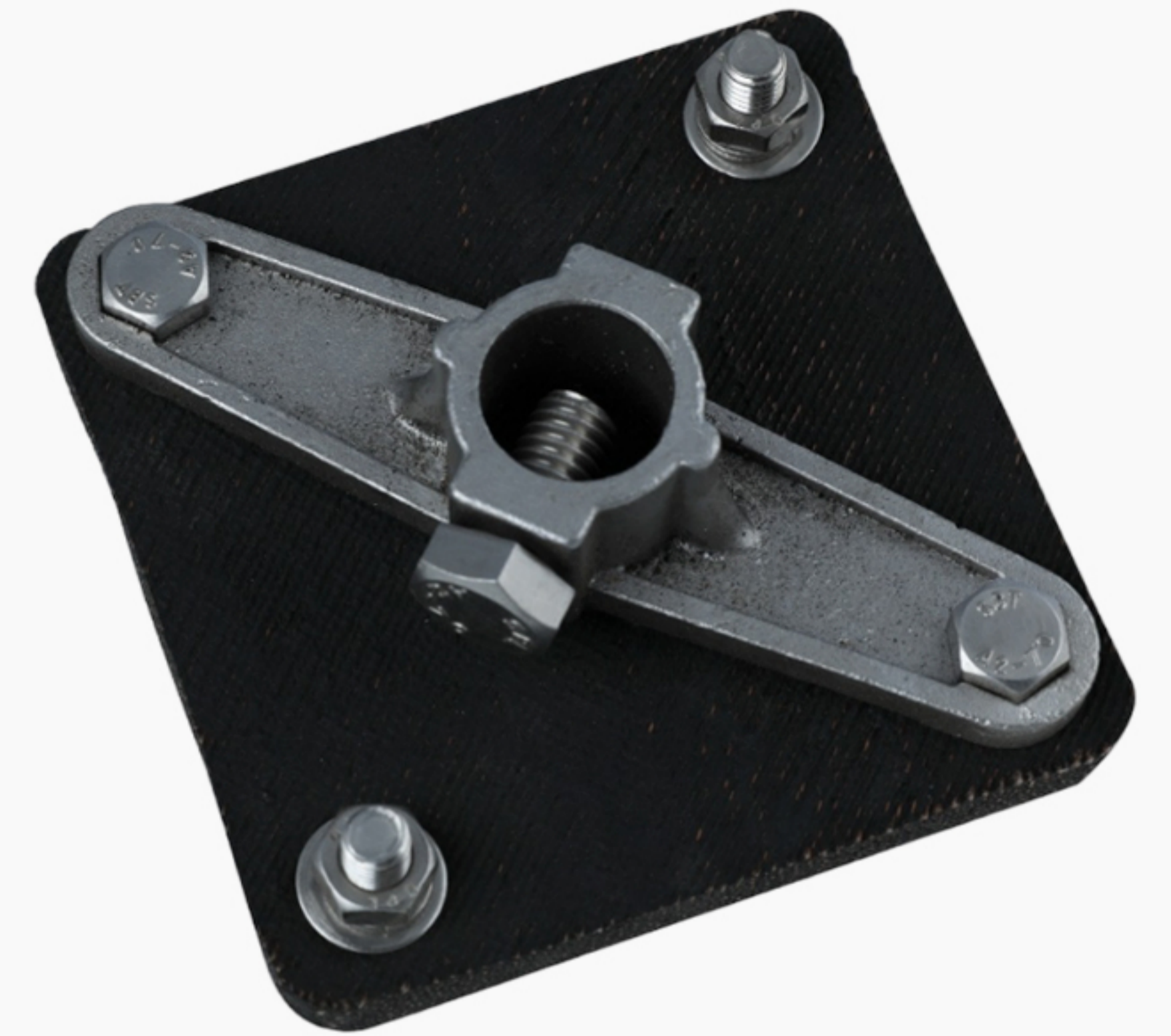
## Motor

IE Class - 2 ISI mark  
Motor ( 1 unit )



## Gear Box

Bevel - Helical Type  
Gear Box ( 1 unit )



## Movable Joint

Stainless Steel - 304 with  
High Quality Rubber ( 2 unit )



## HDPE Float

Virgin HDPE with UV ( 3 unit )



## Impeller

Virgin PP with UV ( 4 unit )



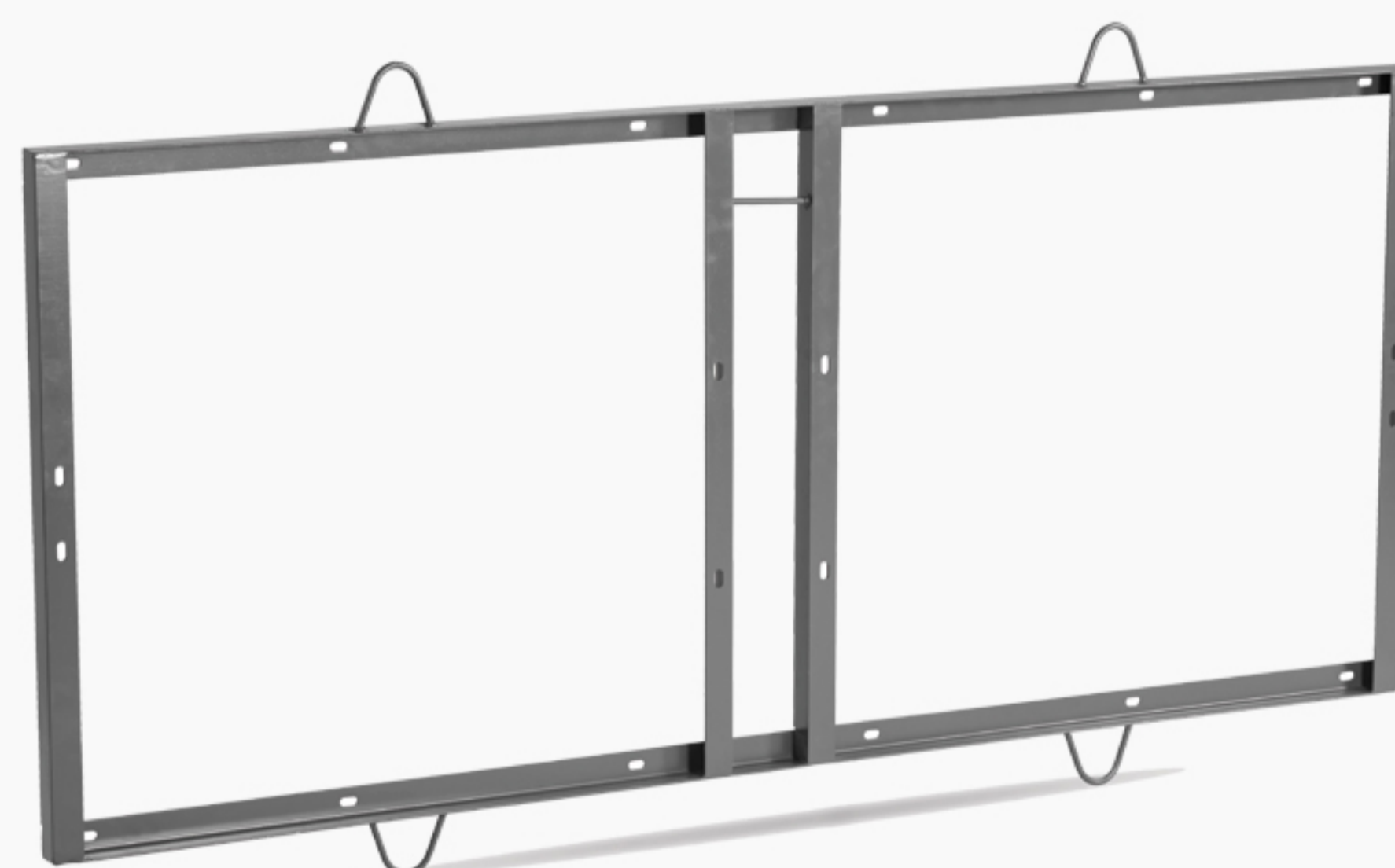
## HDPE Cover

Virgin HDPE with UV ( 1 unit )



## Shafting

Stainless Steel - 304  
Solid Road ( 2 unit )



## SS Frame

Stainless Steel - 304 L  
Angle ( 1 unit )



## Tripod

Virgin Nylon - ( 2 unit )

# 3HP PADDLE WHEEL AERATOR

3HP 6 paddle wheel aerator is the most user friendly and suitable aerator model for semi & big ponds. Our aerators are appreciated for their features like longer life, easy to use, sturdy designs and damage resistance. We are focused towards the quality. In motor we are using H-Class insulation & silicon stamping which reduces the AMPS consumption and having thermo sensor technology which reduces burning issue. Our Motor & Gearbox are CED coated which prevents corrosion issues. These are the key factors which makes our aerator different and globally recognised.

KW	HP	Voltage	HZ	Efficiency	DO	AMP
2.25KW	3	415	50 & 60	84.3%	3.4 - 3.7	3.3



# SPARE PARTS



## Motor

IE Class - 2 ISI mark  
Motor ( 1 unit )



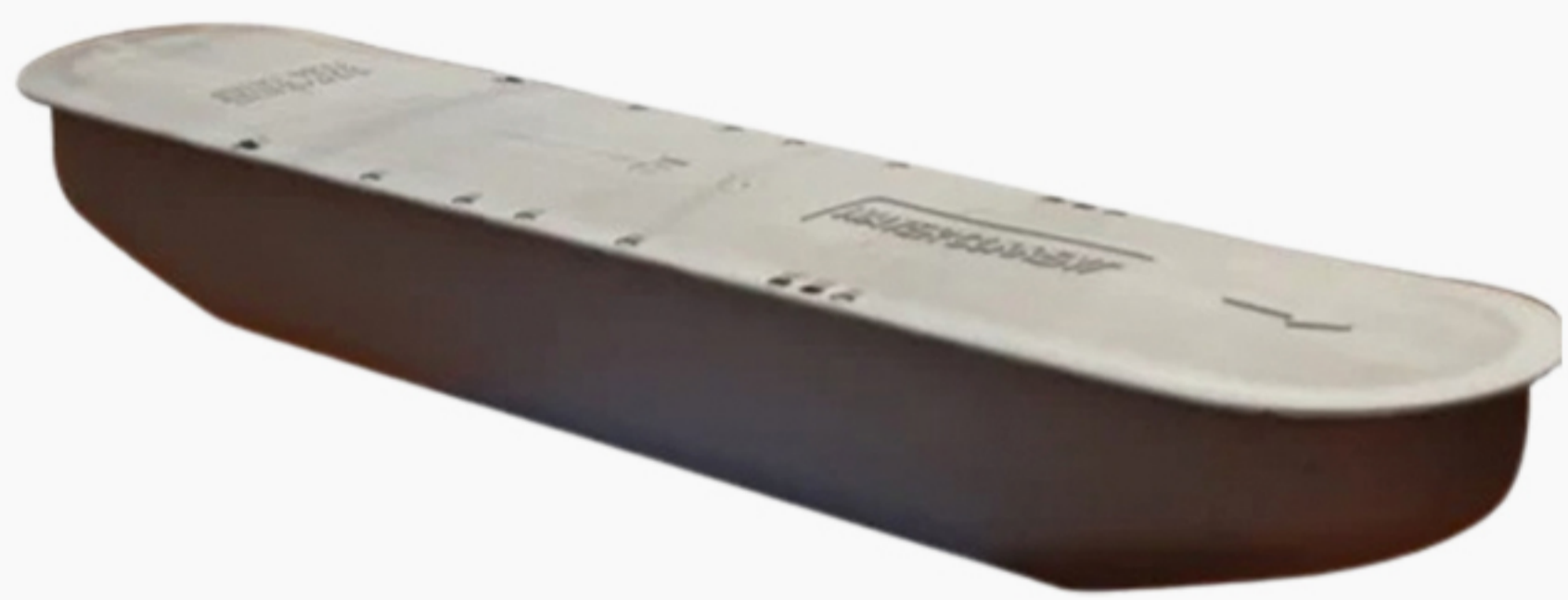
## Gear Box

Bevel - Helical Type  
Gear Box ( 1 unit )



## Movable Joint

Stainless Steel - 304 with  
High Quality Rubber ( 2 unit )



## HDPE Float

Virgin HDPE with UV ( 4 unit )



## Impeller

Virgin PP with UV ( 6 unit )



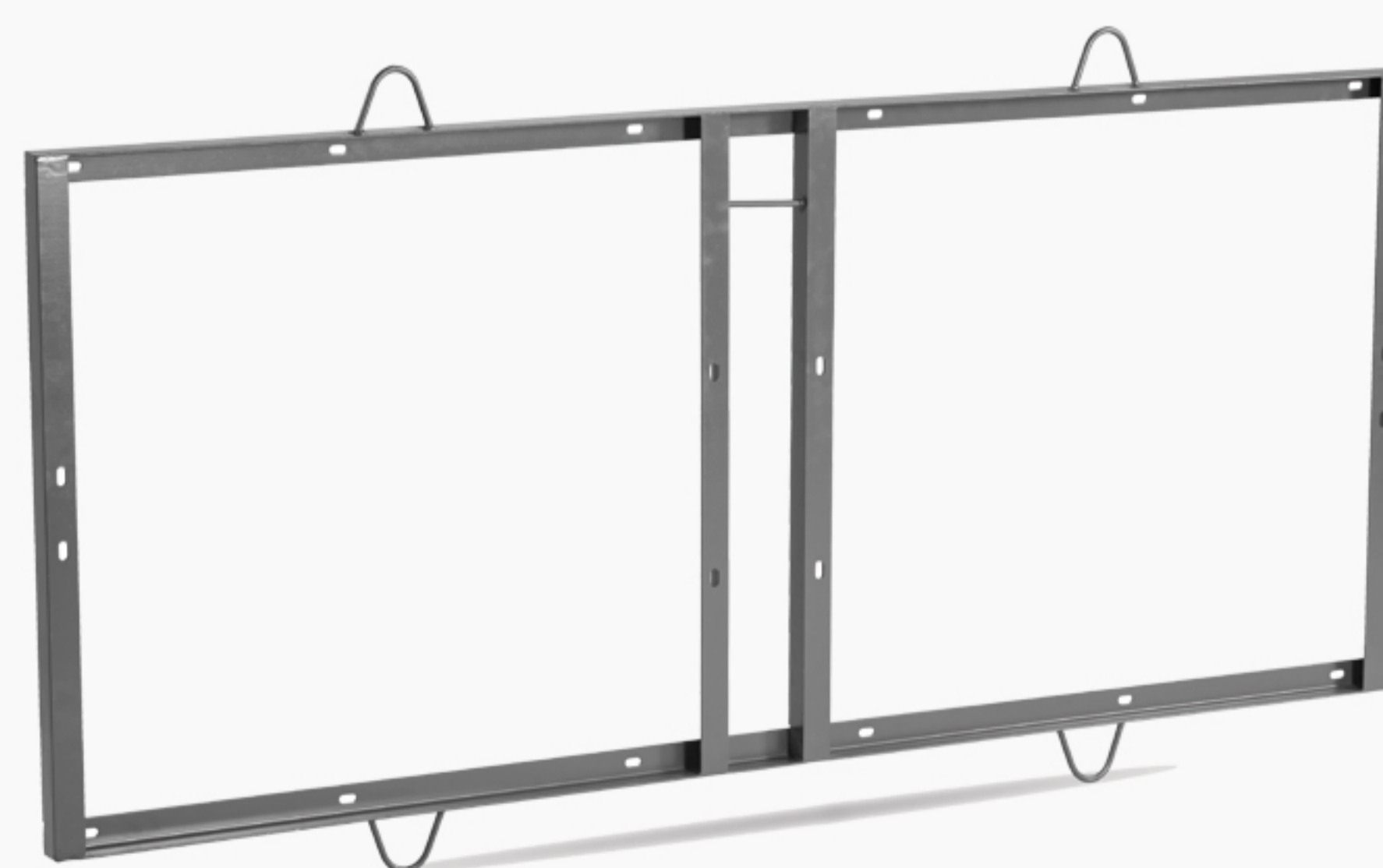
## HDPE Cover

Virgin HDPE with UV ( 1 unit )



## Shafting

Stainless Steel – 304  
Solid Road ( 2 unit )



## SS Frame

Stainless Steel - 304 L  
Angle ( 1 unit )



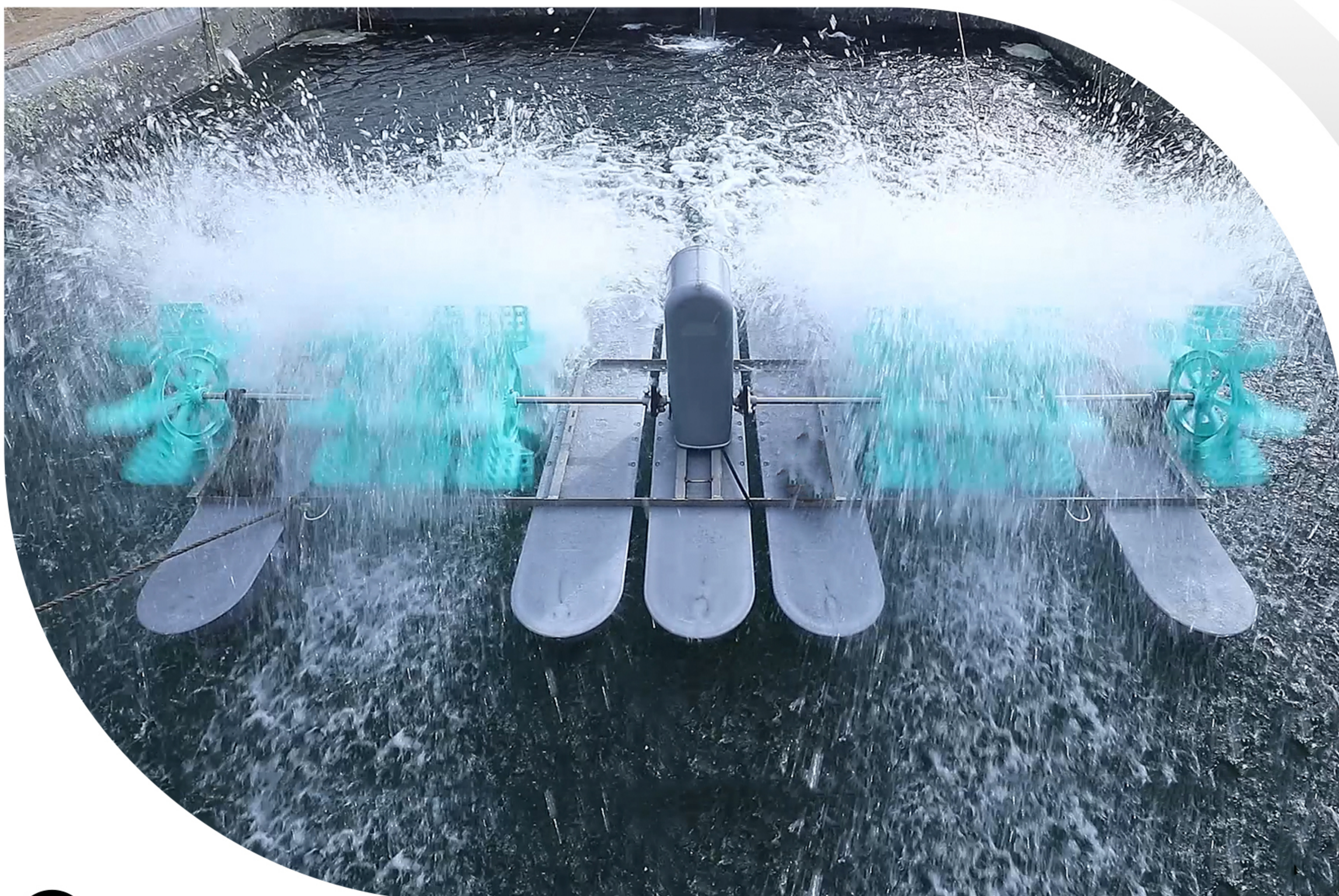
## Tripod

Virgin Nylon - ( 4 unit )

# 4HP PADDLE WHEEL AERATOR

4HP 8 paddle wheel aerator is the most user friendly and suitable aerator model for big ponds. Our aerators are appreciated for their features like longer life, easy to use, sturdy designs and damage resistance. We are focused towards the quality. In motor we are using H-Class insulation & silicon stamping which reduces the AMPS consumption and having thermo sensor technology which reduces burning issue. Our Motor & Gearbox are CED coated which prevents corrosion issues. These are the key factors which makes our aerator different and globally recognised.

KW	HP	Voltage	HZ	Efficiency	DO	AMP
3KW	4	380 - 415	50 & 60	2.25	4.6 - 5.1	4.1 - 4.9



# SPARE PARTS



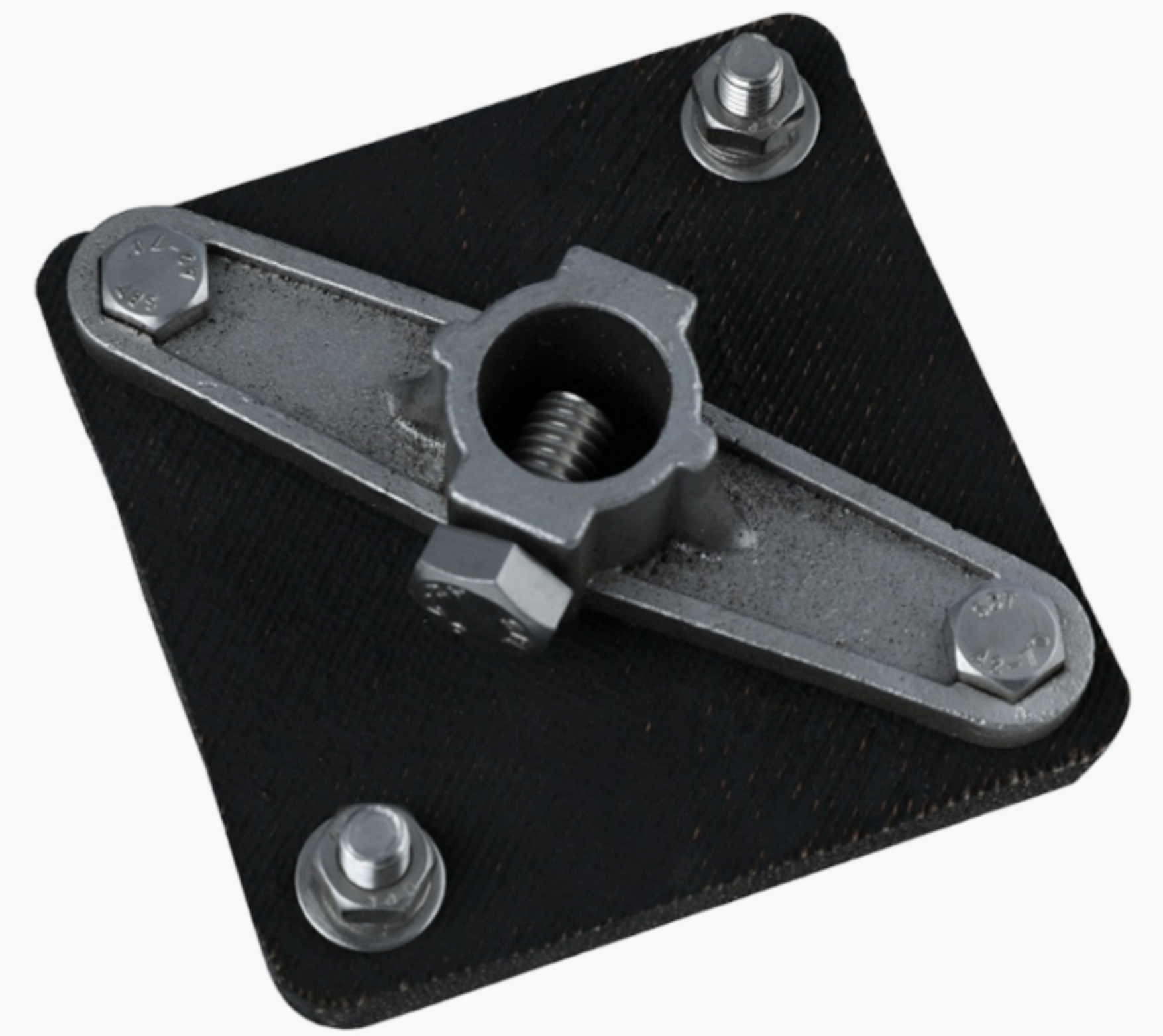
## Motor

IE Class - 2 ISI mark  
Motor ( 1 unit )



## Gear Box

Bevel - Helical Type  
Gear Box ( 1 unit )



## Movable Joint

Stainless Steel - 304 with  
High Quality Rubber ( 2 unit )



## HDPE Float

Virgin HDPE with UV ( 5 unit )



## Impeller

Virgin PP with UV ( 8 unit )



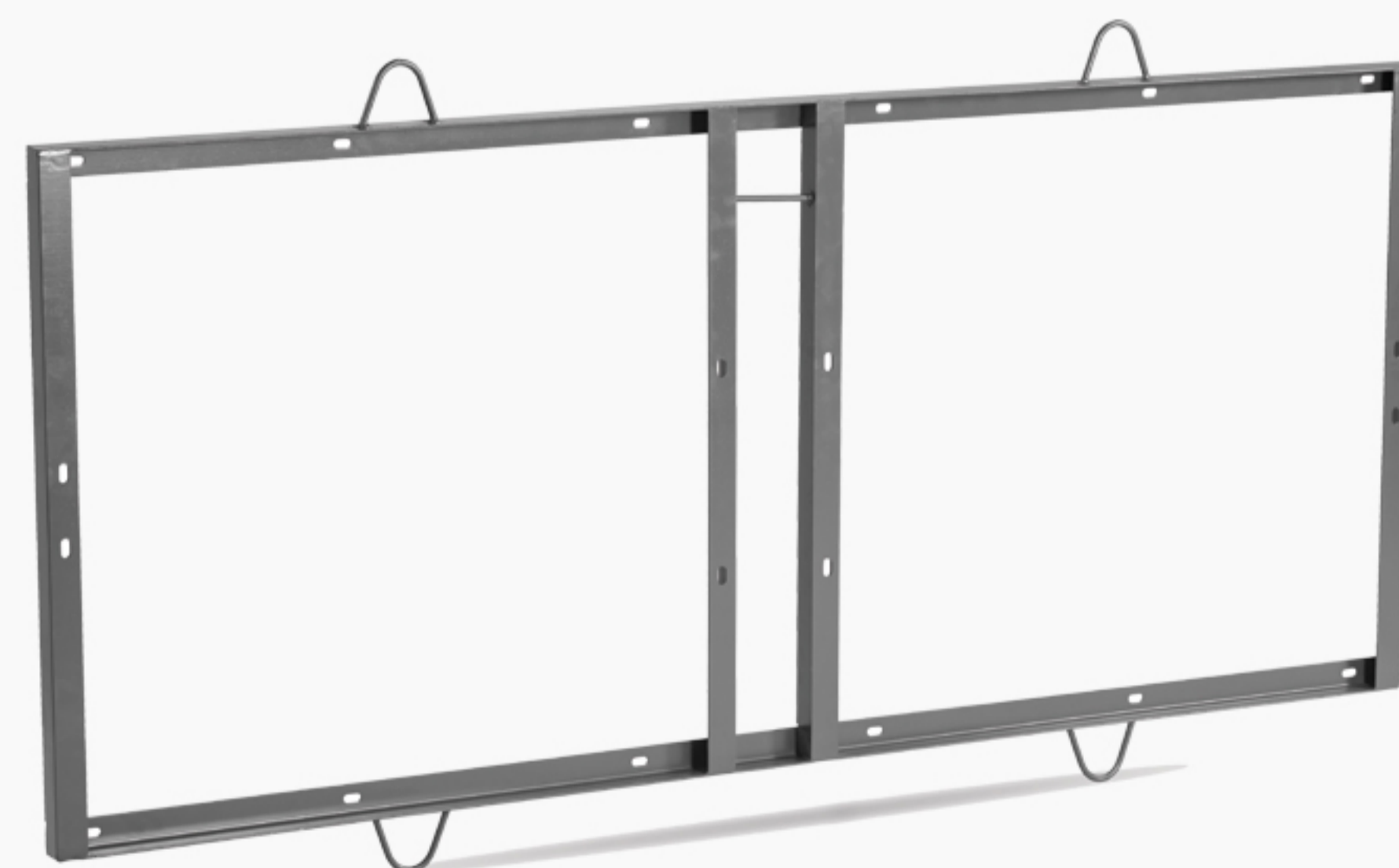
## HDPE Cover

Virgin HDPE with UV ( 1 unit )



## Shafting

Stainless Steel – 304  
Solid Road ( 2 unit )



## SS Frame

Stainless Steel - 304 L  
Angle ( 1 unit )



## Tripod

Virgin Nylon - ( 4 unit )



# SPARE PARTS



**Motor**

IE Class - 2 ISI mark  
Motor



**Gear Box**

Bevel - Helical Type  
Gear Box



**Movable Joint**

Stainless Steel - 304 with  
High Quality Rubber



**HDPE Float**

Virgin HDPE with UV



**Impeller**

Virgin PP with UV



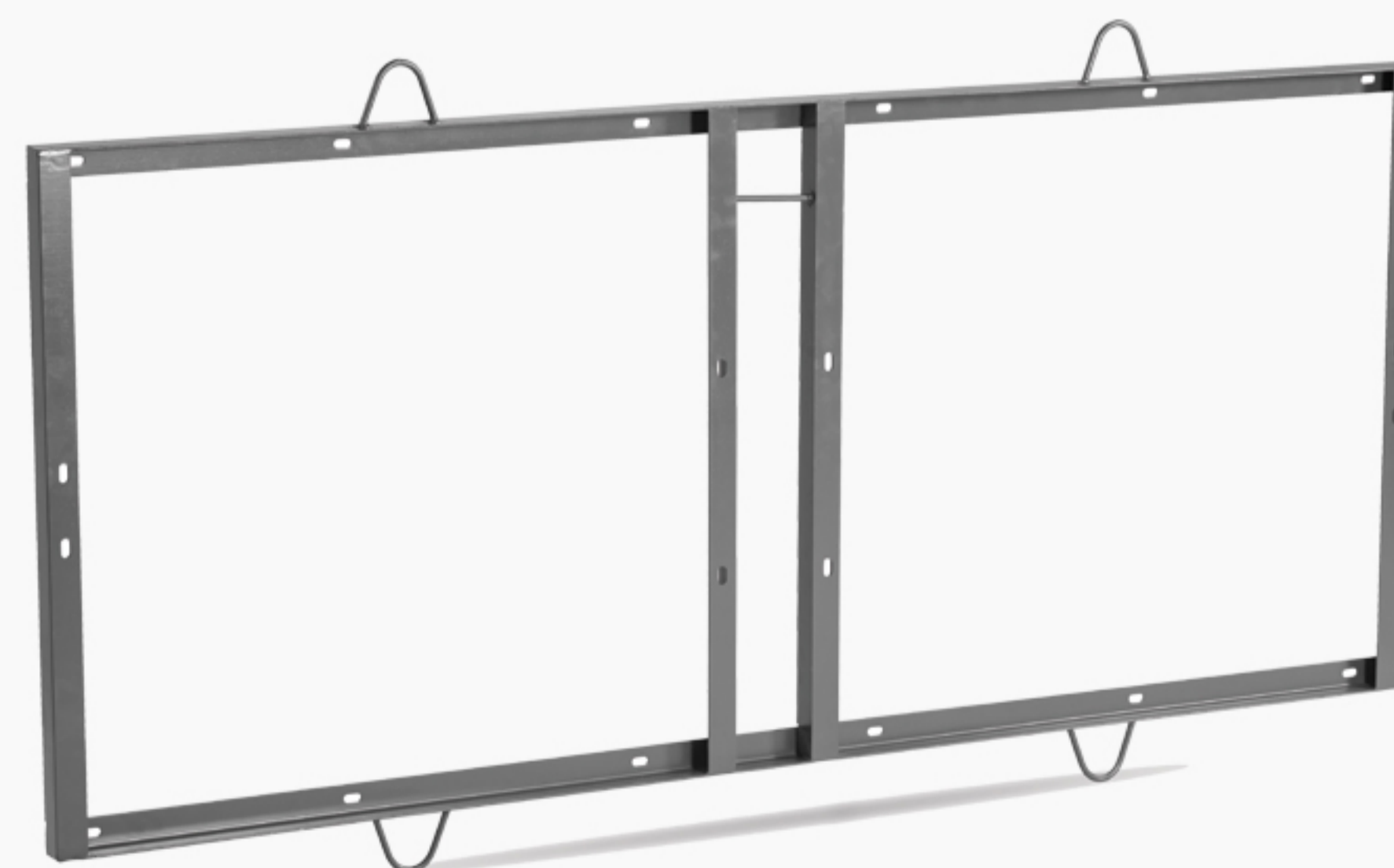
**HDPE Cover**

Virgin HDPE with UV



**Shafting**

Stainless Steel - 304  
Solid Road



**SS Frame**

Stainless Steel - 304 L  
Angle



**Tripod**

Virgin Nylon

# SPARE PARTS



**Motor Cover**



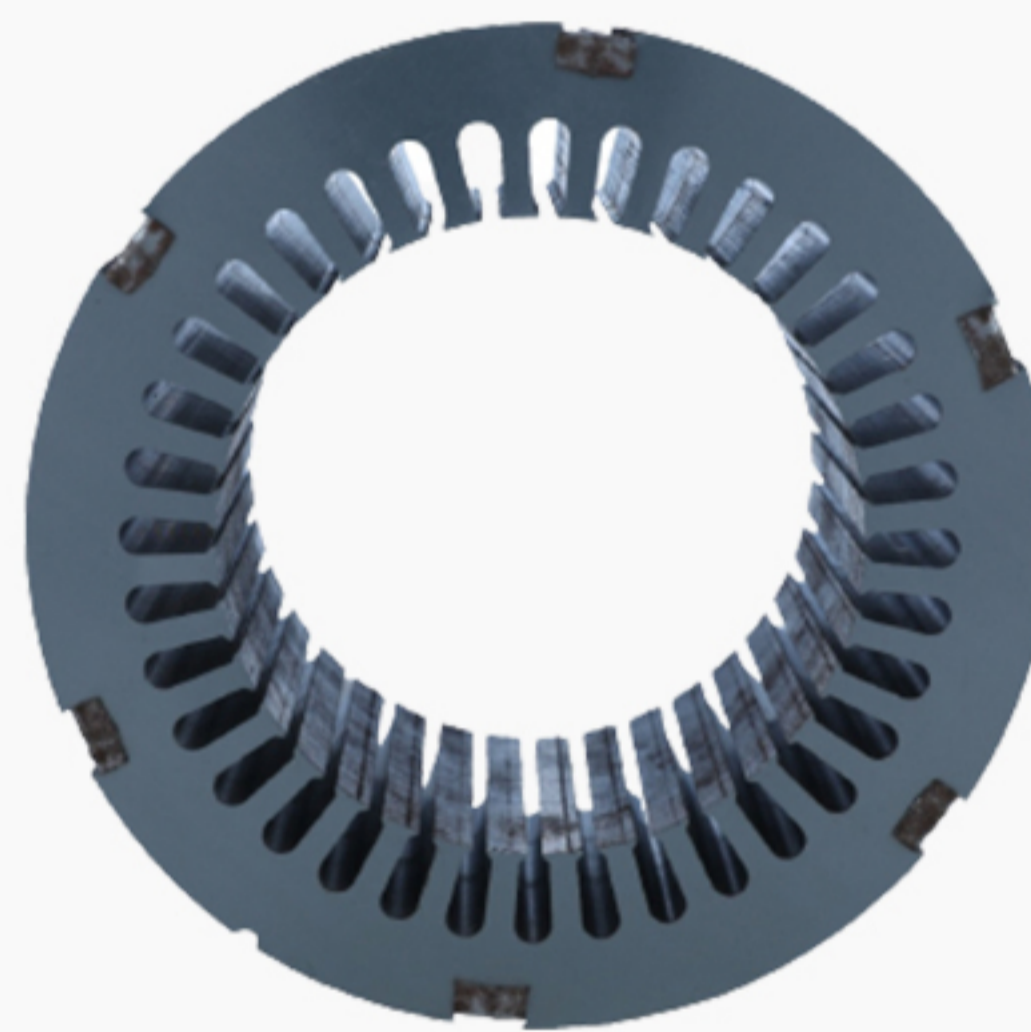
**SS Bolt Kit**  
ss - 304



**Bevel Gear**



**Pure Copper Wire**



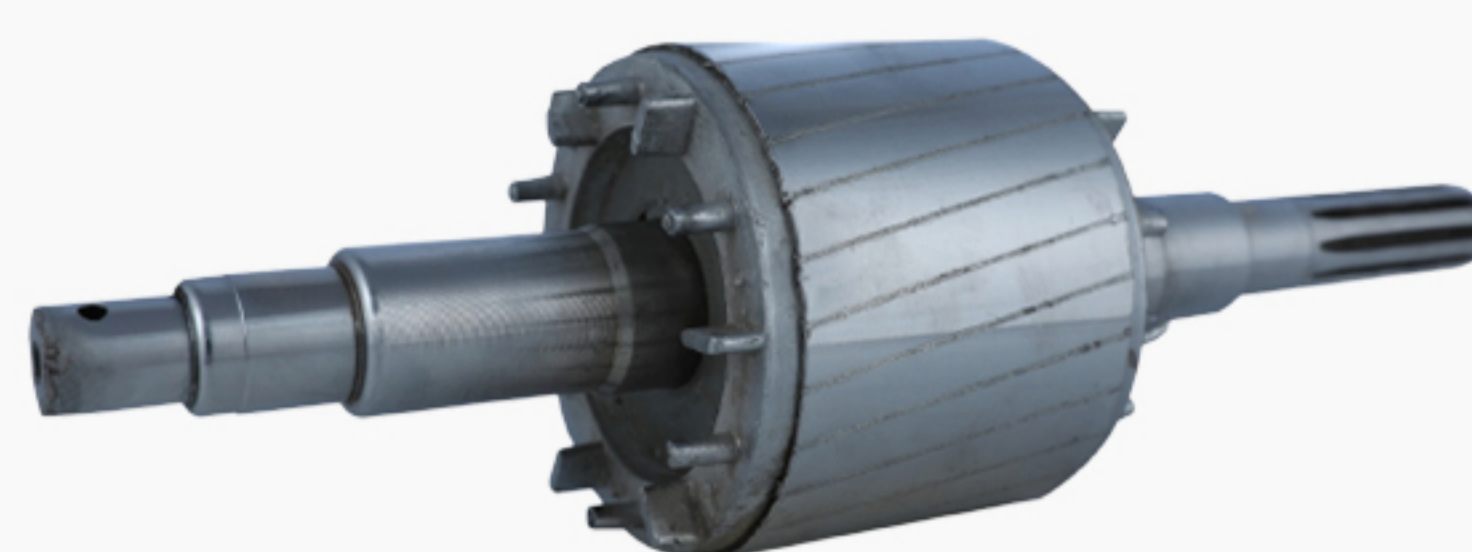
**Silicon Stamping**



**Oil Seal**



**Bearing**



**Alu. Die Cast Rotor**



**SS Shaft**  
SS - 304



Call us

+91 63555 68099

+91 74909 88211



Email us

[info.elizaraquaculture@gmail.com](mailto:info.elizaraquaculture@gmail.com)



Location

Siddhi Vinayak Park Plot No.7, Near AUDI Showroom,  
Kuvadwa Road, Ahmedabad National Highway,  
Rajkot, Gujarat, 360003.

