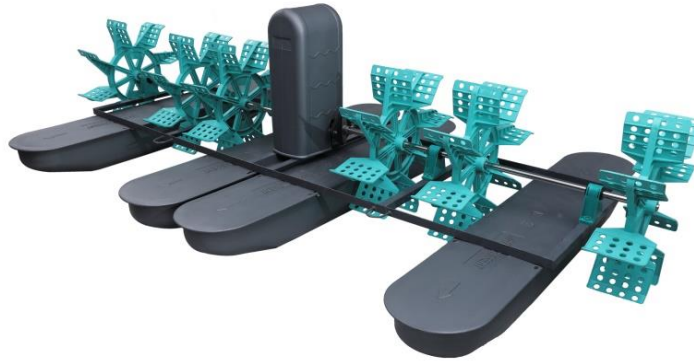


3 HP 6 Paddle Wheel Aerator - Specifications



Finish Product Picture



Spare Parts Product Table

Item	Parts Name	Quantity /Set	Sort Specification
1	Motor	1	IE Class - 2 Motor IP 55/65 With Termo Censor, CED Coating and F Class Insulation
2	Gear Box	1	Bevel - Helical Type Gear Box With CED Coating & Water proof due to External Sleeves
3	Movable Joint	2	Stainless Steel - 304 with High Quality Rubber
4	HDPE Float	4	Virgin HDPE with UV
5	Impeller	6	Virgin Plastic with UV
6	HDPE Cover	1	Virgin HDPE with UV
7	Shafting	2	Stainless Steel - 304 Solid Rod
8	SS Frame	1	Stainless Steel - 304 L Angle with Powder Coating
9	Tripode	4	Virgin Plastic with UV
10	SS Blot Kit	1	Stainless Steel - 304
11	Gear Box Oil	1	Synthetic Gear Box Oil

KW	HP	VOLTAGE	HZ	POWER EFFICIENTY	DO	AMP
2.25	3	380 - 415	50 & 60	1.76	3.4-3.9	3.1 - 3.4

Product Use

3HP 6 Paddle Wheel Aerator is specially design for extensive & modified extensive Shrimp/ Prawn & Fish Aqua Culture. It helps to increase DO (Dissolve Oxygen), it takes low AMPS, due to more depth of impeller in water it creates much oxygen and water current. Due to this farmers can enjoy the product and increase the productivity & quality of the shrimp/fish.

1. Motor 3 HP



Rated Power : 2.25KW

Phase: 3 Phase

Voltage: 380 V

Rated Frequency: 50Hz

Speed(RPM):1750

Motor Body: Casting Body With CED Coating

Color: Epoxy Dark Grey

- Our motor is IE Class -2 IP 55/65 standard to protect from dust & water
- Our Thermo Sensor technology cuts the power when voltage goes high which avoids motor burning issue
- We providing CED coated & Epoxy primer body which protect motor from Corrosion with long life more than 3 years.
- We are using NACHI Bearing smooth running and long life of bearing.
- Our Rotor made by pressure die casting with air fins, which keep motor temp. cool.
- Our Motor fan made by nylon with glass feel material due to this fan never burn Or melt.

2. Bevel Gear Box



RPM : 106

Reducing Ratio : 1:13

Gear Type: Bevel & Helical

Body : Cast Iron Body With CED Coating

Shaft OD : 25mm

Shaft: SS304

Color: Epoxy Dark Grey

- Due to Bevel type gear box, it's saving 20% power consumption compare to Worm type gear box.
- We providing CED coated & Epoxy primer gearbox which protect motor from Corrosion with long life more than 3 years.
- Our gears having long life and water can't enter into the body, because we are using external sleeve.
- Our gear body machining done by HMC machine for accurate Fitting & perfect output.
- We are using NACHI Bearing for smooth running and long life of bearing.
- We are doing 100% noise level testing and water leakage for best quality.

3. Stainless Steel Movable Joint



Material : SS - 304

Rubber : Superior Quality 15mm thick rubber

Bolt : SS - 304

- It doesn't get rust due to SS 304 material
- We are using heavy rubber for long life
- After harvesting you can easily open up, due to SS 304 bolt

4. HDPE Float



Material : HDPE Virgin

Weight : 7.2 KG

Colour: Silver

Length : 174 CM (5 Feet 8.5")

Width : 33.02 CM (13")

Height : 20.32 CM (8")

- Our floater having enough thickness and heavy weight, so it has long life.
- It never get affected by direct sunlight due to adding 4% UV

5. Impeller



Material : Virgin PP

Weight : 2.4 KG

Bush : Brass

Dia : 68 CM

Width : 19.8 CM

Color: Blue

Type : Single Mould

- Due to Single Mould Impeller, it creates more water flow and spread more water
- Brass bushing protect from rust
- It never get affected by direct sunlight due to adding 4% UV

6. HDPE Gear Box - Motor Cover



Material : HDPE Virgin

Weight : 2.3 to 2.4 KG

colour: Silver

Length : 32 CM

Width : 24 CM

Height : 65.5 CM

- Our motor cover having enough thickness and heavy weight, so it has long life.
- It never get affected by direct sunlight due to adding 4% UV

7. Shafting



Material : SS - 304 L Solid Rod

Weight : 9 to 10 KG

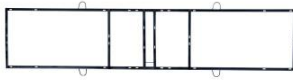
Grow : Made by HMC Machine

Die : 25 MM

Length : 85CM

- It has 100% rust proof due to SS 304 Solid Rod
- It is heavy and having long life, due to using SS 304 material with solid bar

8. Stainless Steel Frame



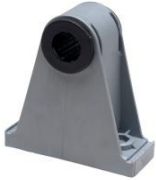
Material : SS - 304 Original L Angle

Weight : 15 KG

Colour: Powder coating for better look

- It gives more stability to aerator in running condition because it is original L Angle heavy frame
- To protect from rust we used SS 304 material with powder coating

9. Tripode



Material : Virgin Plastic With UV

Weight : 0.3 KG

Colour: Blue

- It never get affected by direct sunlight due to adding 4% UV

10. SS Bolt Kit



Material : Stainless Steel - 304

Bolt : 30 Pcs.

Nut: 30 Pcs.

Washer : 54 Pcs.

- It can't get rust easily due to SS 304 material used

11. Gear Box Oil



Material : Mineral base Synthetic Oil

Company: HP EP Parthenon - 320

Volume : 1.25 Litre

- 1.25 Litre oil we are providing with aerator for our customer's easyness.